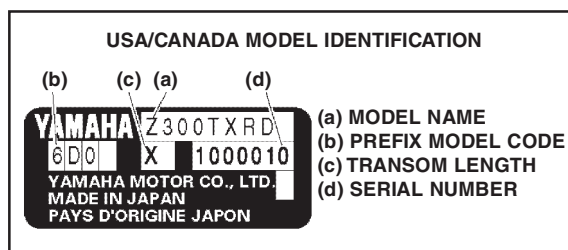


OUTBOARD MODEL CODES

1984 TO 1990 CODE GUIDE				
150	E	T	L	D
Prop Shaft Horsepower	Electric Start	Power Tilt or Power Trim & Tilt	Lower Unit Shaft Length	Model Year
Examples 9.9 15 200			S = 15" (UR Short) L = 20" (UR Long) X = 25" (UR Ultra Long) J = Jet Drive Lower Unit (UR = User Required)	N = 1984 K = 1985 J = 1986 H = 1987 G = 1988 F = 1989 D = 1990

Four Stroke Models: Standard four-stroke models are identified by an "F" before the 9.9 power rating. High thrust four-stroke models are identified by a "T" before the 9.9 power rating.

Special Models: Some special models were produced that did not follow the above model designation procedure. These were the V6 Special (220hp), V6 Excel (225hp), CV and the PRO models. Each of these models did include shaft length and year indicators in their model names.



NOTE: Early models, 1984 to 1986, also had a factory production model variation code marked on the engine similar to: 150AETO. This code does not contain any model year indicator and can be ignored.

Pay special attention to every section of the model code.

1991 TO 2005 CODE GUIDE						
V	X	150	T	L	R	A
Model	Fuel Injected	Prop Shaft Horsepower	Trim & Tilt/ Power Trim & Tilt	Lower Unit Shaft Length	Control Method	Model Year
C = C Series E = Enduro F = Four Stroke L = Left Hand P = Pro S = Saltwater T = Four Stroke High Thrust B = Inshore D = Twin Props V = VMAX	X = 0X66 Z = HPDI	Example: 6 9.9 200	T = Pwr Trim & Tilt with Electric Start P = Pwr Tilt with Electric Start E = Manual Tilt with Electric Start M = Manual Tilt with Manual Start	S = 15" (UR Short) L = 20" (UR Long) X = 25" (UR Ultra Long) U = 30" (UR Super Ultra Long) J = Jet Drive Lower Unit (UR = User Required)	R = Remote Control H = Tiller Handle	P = 1991 Q = 1992 R = 1993 S = 1994 T = 1995 U = 1996 V = 1997 W = 1998 X = 1999 Y = 2000 Z = 2001 A = 2002 B = 2003 C = 2004 D = 2005

APRIL 2005 AND NEWER PRODUCTION MODEL NAME GUIDE

V Model Description	X Fuel Induction	150 Prop Shaft Horsepower	B New Model Designator	T Starting/Tilt Method	L Shaft Length	R Control Method
B = Inshore Series C = C Series D = Twin Propellers E = Enduro Series F = Four Stroke L = Counter Rotation P = Pro Series S = Saltwater Series T = High Thrust V = V MAX® Series Z = HPDI® (High Pressure Direct Injection)	F = Four Stroke X = OX66 Advanced Fuel Injection Z = HPDI® (High Pressure Direct Injection)	Example: 6 9.9 90 150 250 300	Any letter appearing between Prop Shaft Horsepower and Starting/Tilt Method is a "New Model Designator." Where used, these distinguish enhancement(s) to an existing outboard model sufficient to deem it a new model, or a completely new outboard that is a direct replacement of an existing outboard model. Example: VZ300BTLR F9.9FM5H F15CPLH F40BTLR	T = Power Trim and Tilt Model with Electric Start P = Power Tilt with Electric Start E = Manual Tilt with Electric Start M = Manual Tilt with Manual Start	S = 15" L = 20" X = 25" U = 30" J = Jet Drive Unit	R = Remote Control H = Tiller Handle

NOTE: After 2005 model year production, new models being produced will no longer have the last letter of the model code which typically has designated "Model Year" (i.e. 90TLRD will now be 90TLR). Engines produced in April 2005 and later will require the complete PID (model code and serial number) to locate the proper service and parts information.

